

NOT JUST AN ORDINARY EMULSIFIER:
MICRO-EMULSIFIER

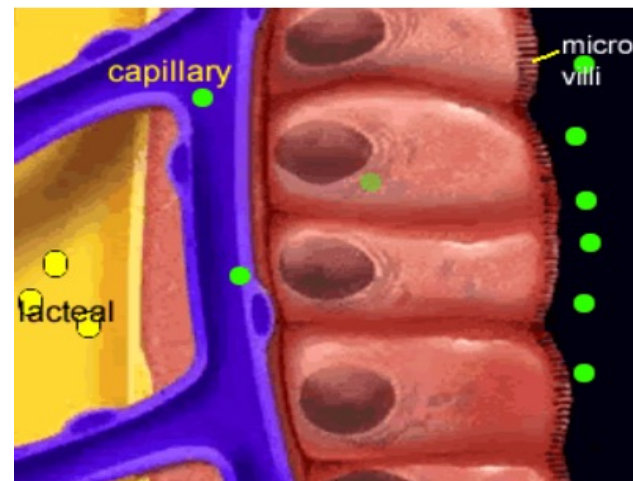
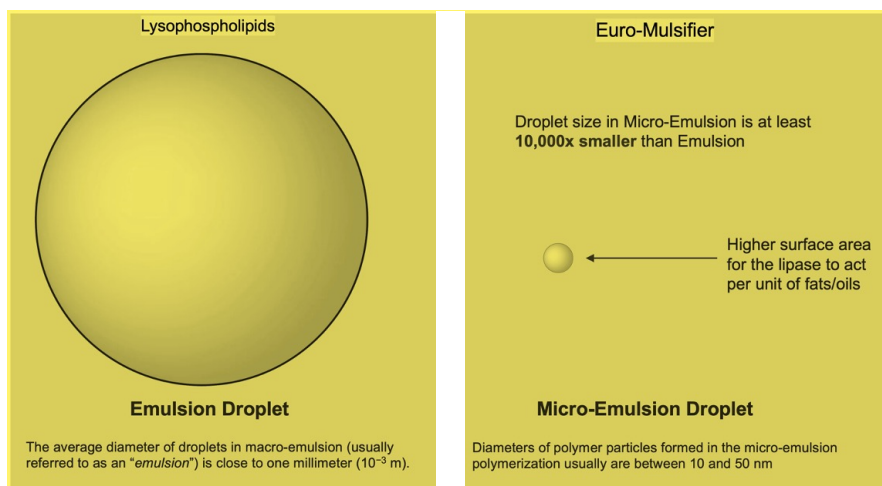
Glyceryl Polyethylene Glycol Ricinoleate (GPGR) a powerful emulsifying agent is the main active ingredient of Euro-Mulsifier. It is derived from natural source - Castor Beans (*Ricinus communis*). The beans contain between 40% and 60% oil that is rich in triglycerides (majority of which is ricinolein).

Monobutyryn provides energy in the development and enhancement of villi – which is responsible for the absorption of nutrients. Bigger villi leads to better absorption of nutrients in the GIT of the animals.

EURO-MULSIFIER UNDERGONE A PROPRIETARY SPECIAL PROCESS TO BECOME A MICRO-EMULSIFIER

Advantages of Euro-Mulsifier (a micro-Emulsifier) vs. ordinary Emulsifiers:

1. It has a longer shelf life – up to 24 months
2. Safe for human consumption. It is also used in food processing due to its resulting stabilized emulsion.
3. It has non-polar head – unlike lysophospholipids it does not interact with cations and anions present in the water in the GIT of the animals.
4. It is pH stable – active in the different pH range inside the GIT of the animals.



5. The resulting emulsion droplets in micro-emulsion is at least 10,000x smaller than that of ordinary emulsion. Lipase will be more effective in digesting fats and oils due to higher surface area for it to act on.

6. Ordinary emulsifiers will only help the animals only until emulsification. Euro-Mulsifier will help your animals up to the absorption of fats/oils as well as other nutrients – function of Monobutyryn.

Euro-Mulsifier not only improves energy utilization of fats and oils.

Euro-Mulsifier improves about 100 kcal ME/kg of feed:

It contains esterified short chain fatty acids that boost 1.9% increase in ME

It improves digestibility of fats and oils by an average of 5.3%

It improves non-fat components of feeds by eliminating lipid coating around the carbohydrates in grains (eg. wheat and corn) – it increases non-fat matter digestibility on the average of 1.3%.

Dosage Recommendation: Swine and Poultry

0.5 to 1.0 kg per metric ton of feeds

Dosage can be modified based on a recommendation of a qualified animal nutritionist

Packing size:

25 kg multi-wall kraft bag

Storage Recommendation:

Store in a cool, dark and dry place.



Made in Belgium